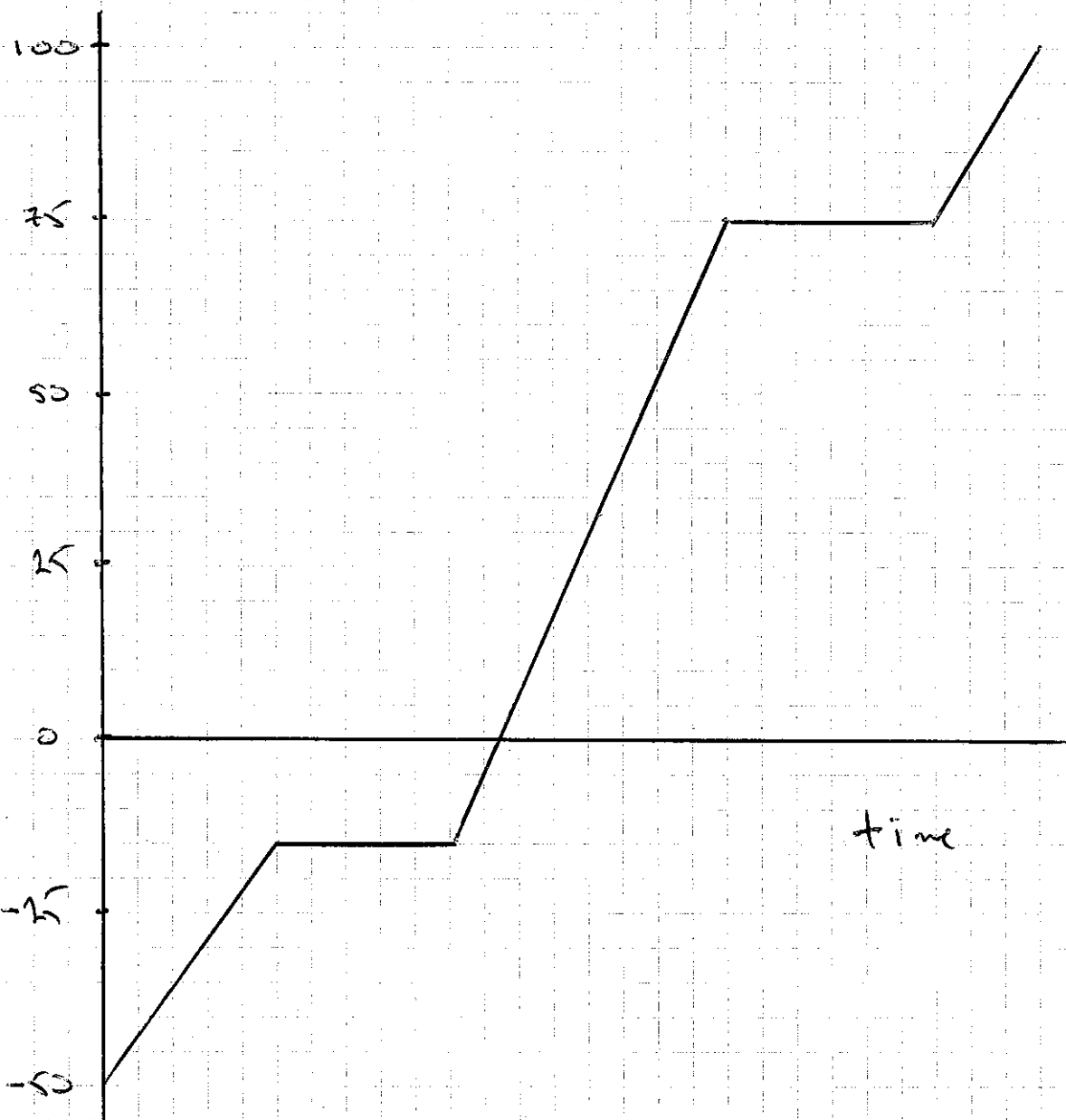


Worksheet # 5

- ①
- a) 0-4 s (when solid)
 - b) 8-18 s (when liquid)
 - c) 22-28 s (when a gas)
 - d) 4-8 s (while melting)
 - e) 18-22 s (while vaporizing)
 - f) 5°C (lower plateau)
 - g) 55°C (higher plateau)
 - h) 0-4, 8-18, and 22-28 s
(Whenever temp is going up)
 - i) 4-8 and 18-22 s
(when temp is not changing)

②

Temp
(°C)



time